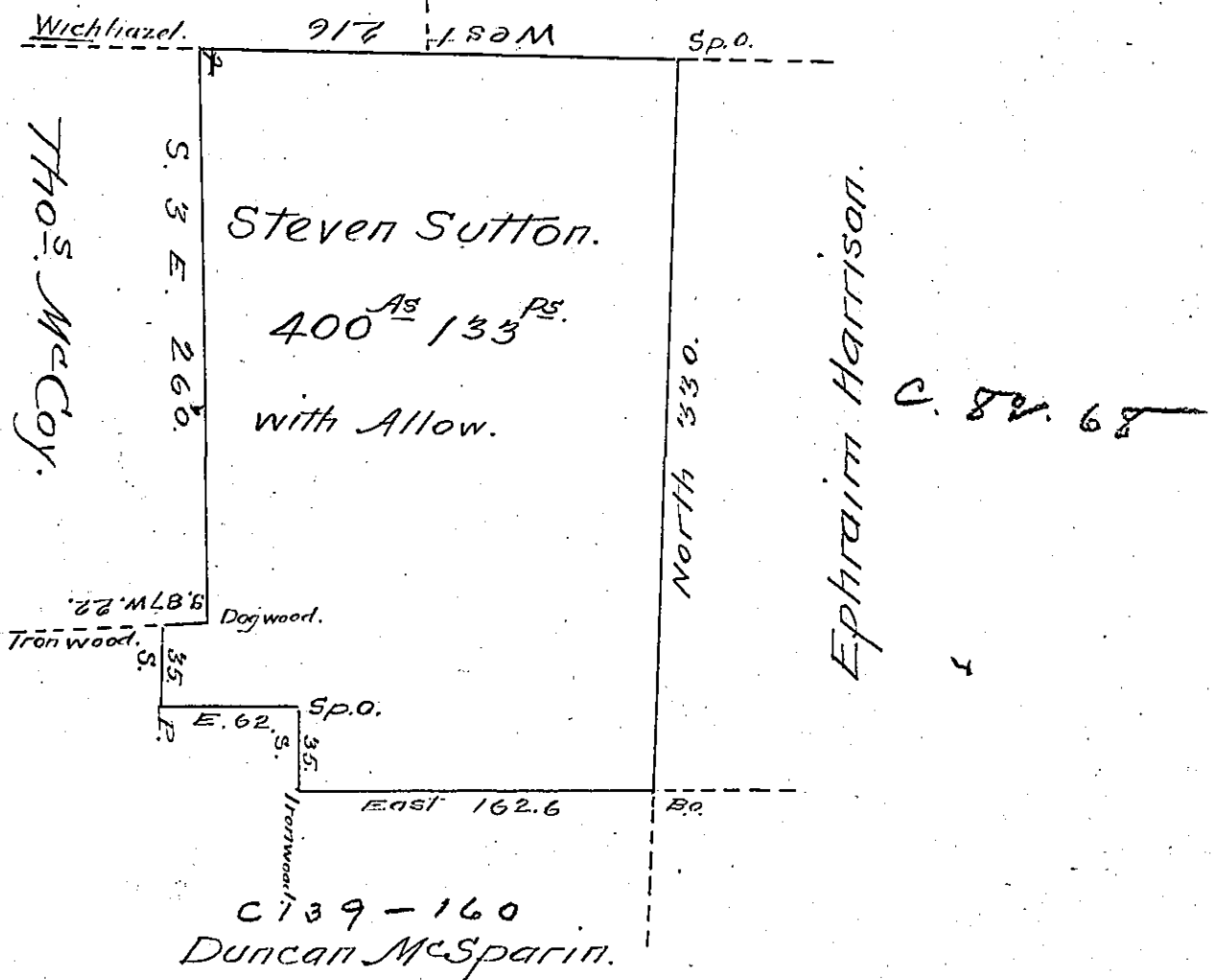


Wm. Reeves.

Donation Land.



Situate on the Waters of Wolfcreek in Wolfcreek Township Mercer County Containing four hundred Acres and one hundred and thirty-parches with Allowence of Six per cent Surveyed August 31st 1803 in pursuence of a Warrent granted to Steven Sutton Dated the 14th of June 1803.

John Findley D.S.

% Sam^l Cochran Esq^r S. G.

IN TESTIMONY that the above is a copy of the original remaining on file in the Department of Internal Affairs of Pennsylvania, made conformably to an Act of Assembly approved the 16th day of February, 1833, I have hereunto set my Hand and caused the Seal of said Department to be affixed at Harrisburg, this twelfth day of December 1906.

Isaac P. Brown
Secretary of Internal Affairs.